

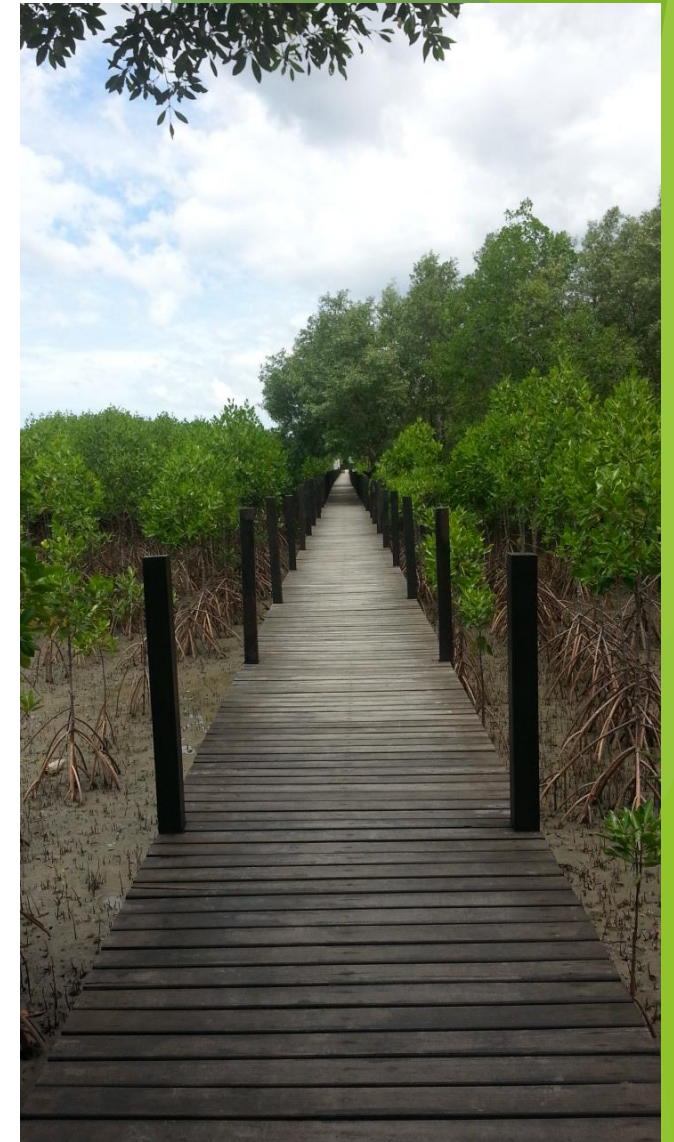


Biodiversity Supplier Partnership

Committee Meeting February 27, 2018

Value to SP Membership

- ▶ Benefit natural communities of plants and animals
- ▶ Educate employees and other stakeholders
- ▶ Boost employee engagement and morale
- ▶ Reduce operating costs
- ▶ Improve community relations
- ▶ Beautify space



GM Powertrain, Rayong, Thailand

Management Engagement and Commitment

Management makes a commitment or announcement of commitment to biodiversity

- Public statement kicks off the activity

- Affecting cultural change

- Top down approach to ensure internal culture takes notice

GENERAL MOTORS



Company determines what it is to them

- ▶ A company needs to determine what is this?
- ▶ What does it mean to them? Will there be goals?
- ▶ What kind of commitment is it?
- ▶ How will it be approached?
 - ▶ Internalized VS Consultants
 - ▶ Timeline

GENERAL MOTORS

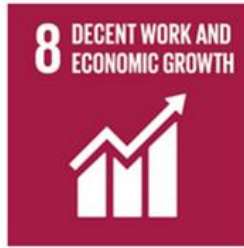


Sustainability Strategy Alignment & Business Alignment

- ▶ Sustainability strategy alignment with outside standards - SDGs
- ▶ How does this fit into your business
- ▶ Dow Jones Sustainability Index
- ▶ GRI Report

GENERAL MOTORS

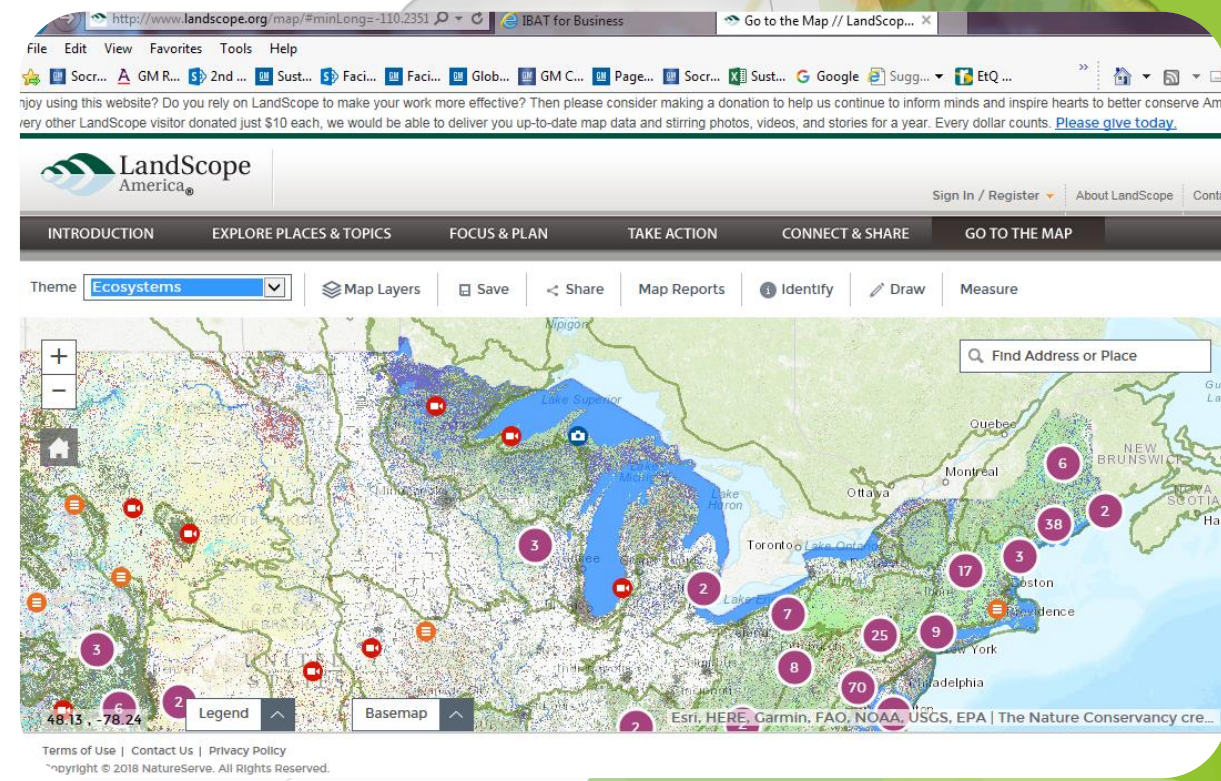
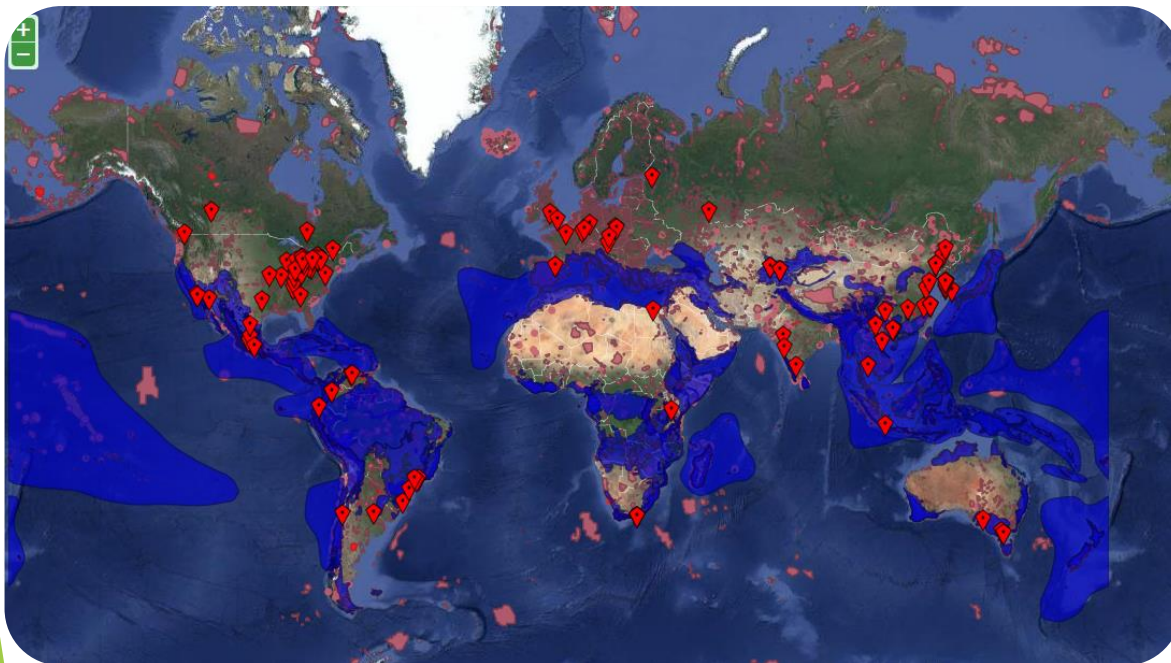




On September 25th 2015, countries adopted a set of goals to **end poverty**, **protect the planet**, and **ensure prosperity for all** as part of a new sustainable development agenda. Each goal has specific targets to be achieved over the next 15 years.

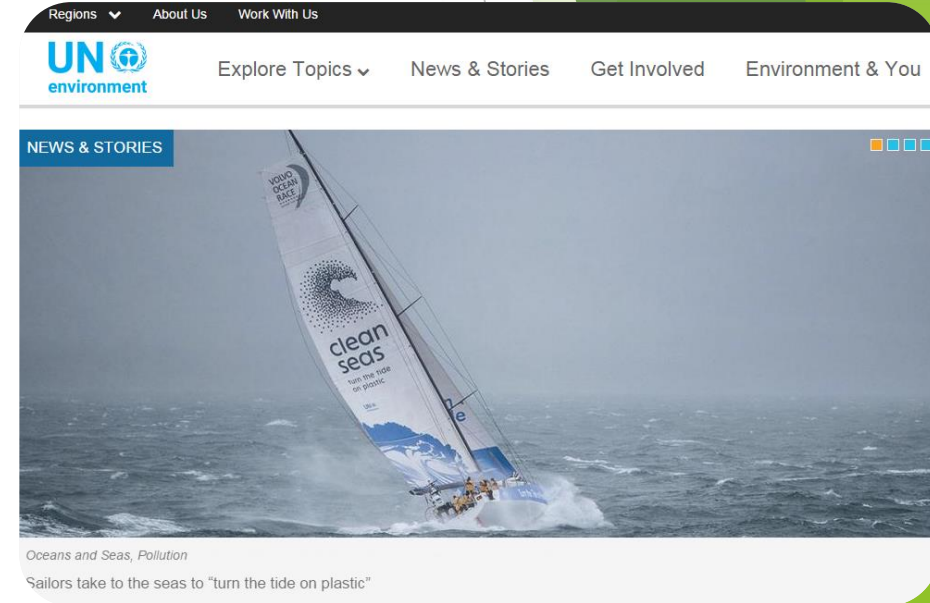
Tools & Resources

- ▶ WHC
 - ▶ Standards
 - ▶ Conservationists
- ▶ IBAT
 - ▶ Data regarding site area, set buffers of what size areas to look at - global database
- ▶ Landscape



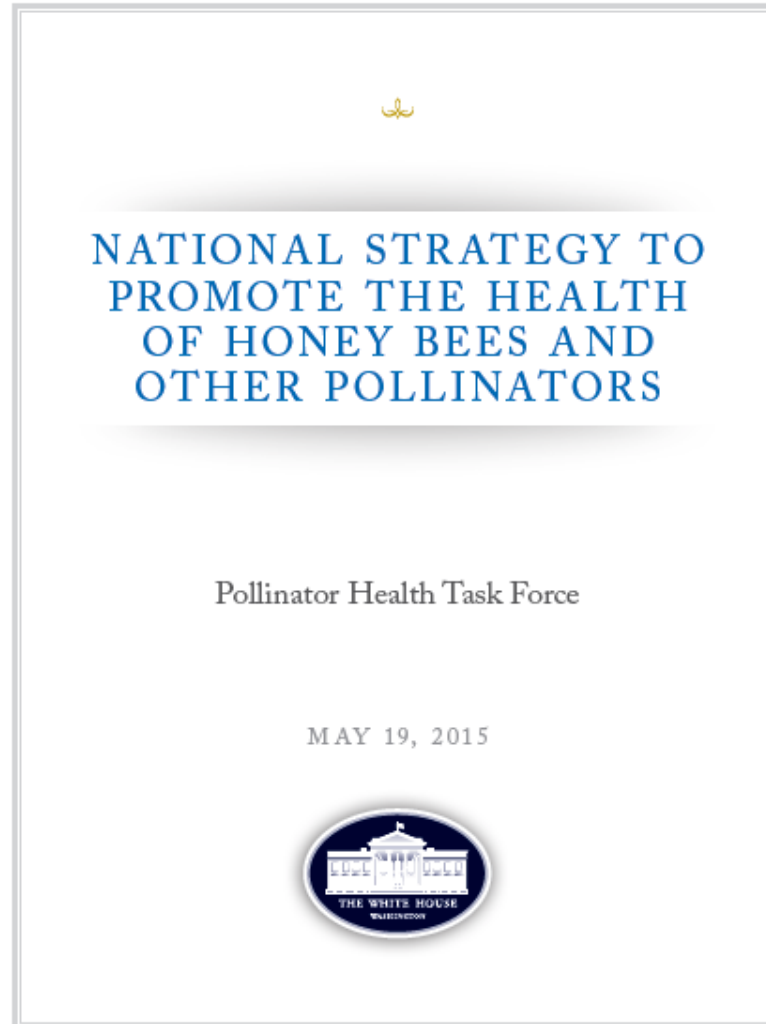
Resources

- ▶ Wildlife Habitat Council - <http://www.wildlifehc.org>
 - ▶ Written standards available on line
 - ▶ Conservationists available
- ▶ Landscape - NatureServe's free software to add layers of information surrounding a point to understand what is nearby
- ▶ Pollinator Partnership
 - ▶ North America Pollinator Partnership Campaign
- ▶ UNEP -
 - ▶ SDGs - common global goals for 2030 for the advancement of sustainability
 - ▶ IUCN - the technical arm
 - ▶ IBAT - Integrated Biodiversity Assessment Tool



Pollinator Projects

- ▶ Pollinators
 - ▶ Supports the national pollinator health strategy
 - ▶ Resources
 - ▶ Wildlife Habitat Council - standards
 - ▶ NAPPC
 - ▶ Goals
 - ▶ Timeline
 - ▶ Questions
- ▶ Other projects



David Monk, GM Tech Center, Warren, MI



Mark Thorndyke, GM Tech Center, Warren, MI

Next Steps

- ▶ Notes:
- ▶ Meeting type, date, time: