




MANUFACTURE
2030

*Making Sustainable
Manufacturing Happen
at Scale.*




www.manufacture2030.com
customer_service@manufacture2030.com

One global platform.

Bringing retailers, brands and their manufacturing suppliers together to cut costs, risks and environmental impacts through cross-industry collaboration.

With a mission to more than **halve** the amount of resources used in global manufacturing by **2030**.



RESOURCE EFFICIENCY IS NOW CRITICAL TO BUSINESS PERFORMANCE

COST

Increasing competition and rising input costs drive a greater focus on operational efficiency

REPUTATION

Customers increasingly prefer products and suppliers with lower environmental impact

A CLEAR BUSINESS CASE

Average yearly resource efficiency improvement in manufacturing:

Best in class:

7%

Others:

1%

Leading manufacturers are outperforming their peers by 6% per annum.*

Each year their ability to win on cost and environmental performance gets stronger.

**Institute for Manufacturing, University of Cambridge*

The business case for improving energy, water and waste efficiency in manufacturing companies is clear.

But it's difficult to deliver the required change using homegrown solutions, because challenges get in the way of progress.

SITE LEVEL CHALLENGES

Identifying which resource efficiency opportunities to prioritize, how to progress them quickly, and at low risk.

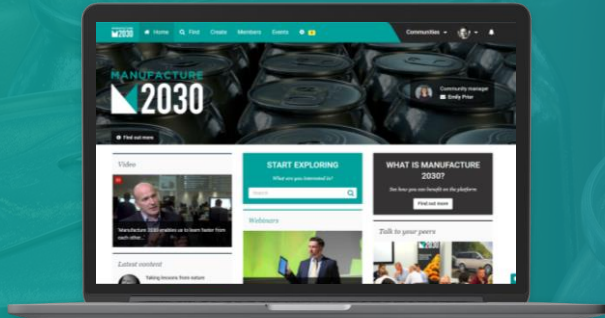
Managing a busy team to deliver large numbers of improvement opportunities, across diverse processes and equipment.

ENTERPRISE LEVEL CHALLENGES

Creating consistent high performance across your sites, by sharing the experience of the best performers without slowing them down.

Managing and reporting on progress across a diverse portfolio of sites and operational teams.

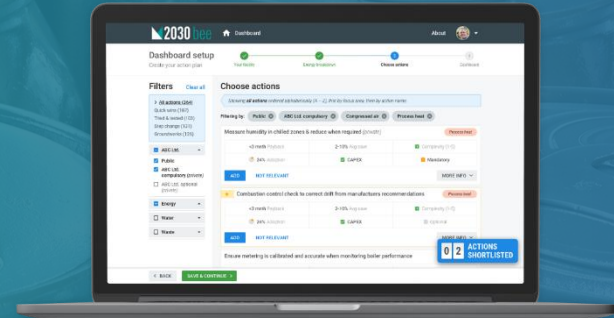
M2030 Community



Explore. Learn. Connect.

A private non-competitive space to explore the latest best practice, learn from thought leaders and connect with like-minded peers in other companies and sectors.

M2030 Bee



Resource efficiency. Made simple

A unique digital platform that makes it easy to deliver improved resource efficiency across manufacturing operations.

SP Channel





Amplifying our impact.


Our private channel on Manufacture 2030 will help SP to make collaboration, best-practice sharing and dialogue between members happen more easily and regularly, online.

MANUFACTURE 2030

Home Find Create Members Events

Communities  

SUPPLIERS PARTNERSHIP FOR THE ENVIRONMENT **Channel**
Part of Manufacture 2030

 Community manager
Kellen Mahoney

[Find out more](#)

WHERE TO START

What's it all about?

[Find out more!](#)

START EXPLORING

What are you interested in?

ASK & SHARE

Get insights and share your perspective

[Start a conversation](#)

Welcome

WELCOME!


What are your 2018 priorities?

Can you help answer?

Light-weighting of cars etc.
Im interested to understand the strategies going forwards and the thoughts about 'new m...'
[1 Like](#)

Solutions for ESD bags?
An SP member with a zero waste goal recently shared a few challenging materials that th...

Latest content



RB

SP Case Study - Gulf Oil Spill Clean-Up
SP members John Bradburn (GM), Shane Bennett (Mobile Fluid Recovery) and Chris Miller (...)
[1 Comment](#)

Light-weighting of cars etc.
Im interested to understand the strategies going forwards and the thoughts about 'new m...'
[1 Like](#)

What is the SP Channel?
The SP Channel is a place for global

Upcoming events

January
30
2018


SP Q1 Membership Meeting
SP's 1st Quarter Meeting of 2018 will be held on January 30-31, 2018 and will be hosted...

May
09
2018

SP Q2 Membership Meeting
SP's 2nd Quarter Meeting will be held on May 9-10, 2018 at FCA US LLC located at 1000 C...

[VIEW MORE MEMBERS](#)

M2030 bee



2030 bee

Resource efficiency.
Made simple.

[Get a free demo or trial](#)

As SP expands the scope of its mission, we feel it important to leverage tools such as Manufacture 2030 to help us in amplifying SP's impact across the global automotive supply chain and beyond.

My Suppliers Partnership Channel

Revisit your favorite content, or check out your recent activity



Favorites



Followed areas



Priority areas



My profile



Recently viewed

BIODIVERSITY

Biodiversity

RESOURCE EFFICIENCY

Circular economy

Efficient technologies

Energy Management

Packaging

Waste & resource management

Water use

TOOLS

Guides & resources

We hope that the SP Channel will provide further opportunity for members to:

- share information with peers*
- learn from others about issues impacting the environment and their business operations, and*
- identify leading practices and opportunities for collaborative action.*

MANUFACTURE 2030 Home Find Create Members Events Communities

ALL AREAS

- BIODIVERSITY
 - Biodiversity
- RESOURCE EFFICIENCY
 - Circular economy
 - Efficient technologies
 - Energy Management
 - Packaging
 - Waste & resource management
 - Water use
- TOOLS
 - Guides & resources
- MY FOLLOWED AREAS
- FAVORITES
 - Click on any Favorite icon to save links here.

Edit Delete Hide More Collections

Like Favorite Notify me

SP Case Study - Gulf Oil Spill Clean-Up

H.R. Topham - Follow
Ventures Studio
21 hours ago

1 comments

SP members John Bradburn (GM), Shane Bennett (Mobile Fluid Recovery) and Chris Miller (GDC, Inc.) discuss how they worked together to convert oil soaked booms from the Gulf Oil Spill into parts for the Chevy Volt.

YOUTUBE SUPPLIERS PARTNERSHIP FOR THE ENVIRONMENT

John Bradburn
Global Manager of Waste Reduction
GM

powered by embedly

H.R. Topham
Senior Account Manager, with Ventures6 - Visual Storytellers and Content Creators.

Follow

Like Favorite Notify me

Add a comment

Kellen Mahoney
Community manager, Navista The Public Affairs Grou...
21 hours ago

Great work John, Shane and Chris! And, thanks again to you and Matt for pulling this video together. @hr-topham!

What methods have other members found work best in communicating your sustainability efforts? Are you using video to share your sustainability stories with your employees or external stakeholders? Looking forward to everyone's thoughts.

Reply

Light-weighting of cars etc.



Russell Brynolf - Follow
FTS Technologies
17 Jan

1 Like
0 comments

Im interested to understand the strategies going forwards and the thoughts about "new materials" that could be used. Huge subject with overall many challenges but placed in the concept of manufacturing technologies and ability to recycle down the lifecycle chain, an important way forwards with many positive outcomes.

Lets discuss, learn and solve the issues together.

We encourage all members to use the SP Channel to share ideas, challenges, questions, and resources with the group (no sales pitches please!), and welcome any feedback or questions you may have.

SUPPLIERS PARTNERSHIP
FOR THE ENVIRONMENT **Channel**
Part of Manufacture 2030

Log in

Email address

Password

Forgotten password?

Log in

Register an account



Community Manager

✉ Kellen Mahoney

The SP Channel is a place for global automakers, their suppliers & global environmental agencies to drive collaborative action in order to enhance the environmental sustainability performance of the global automotive supply chain.

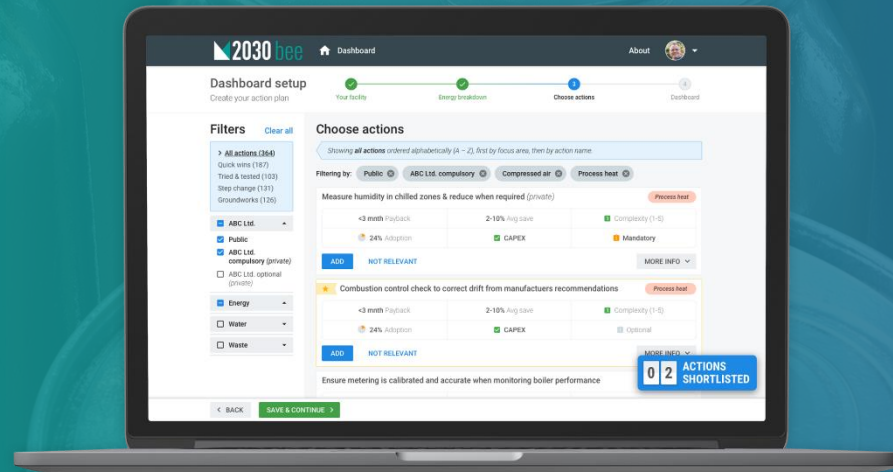
All SP members are welcome to join - simply click 'Register an account' on this page to request access.

Join us!

www.2degreesnetwork.com/groups/suppliers-partnership-channel/

RESOURCE EFFICIENCY. MADE SIMPLE.

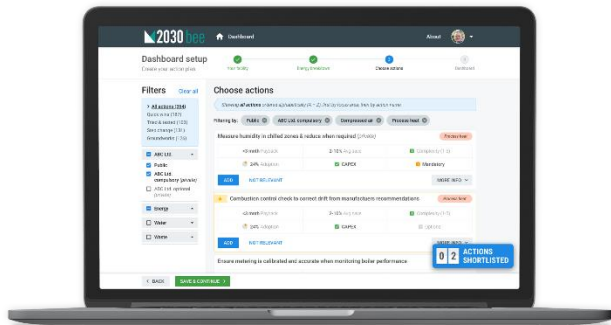
M2030 Bee



HOW M2030 BEE SOLVES YOUR SITE LEVEL CHALLENGES:

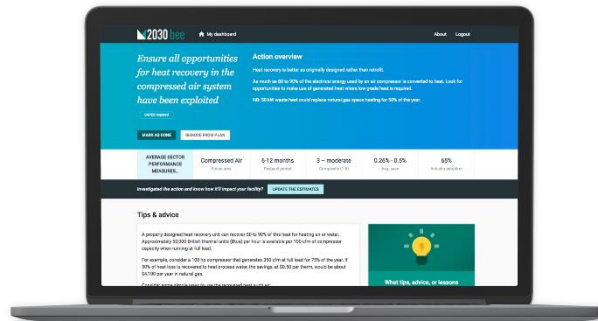
PRIORITIZE IMPACT

Overcome uncertainty about which efficiency gains to prioritize for each site. M2030 bee provides your teams with the data and experience that they need to make good decisions. And it's easy to integrate with your existing playbooks if desired.



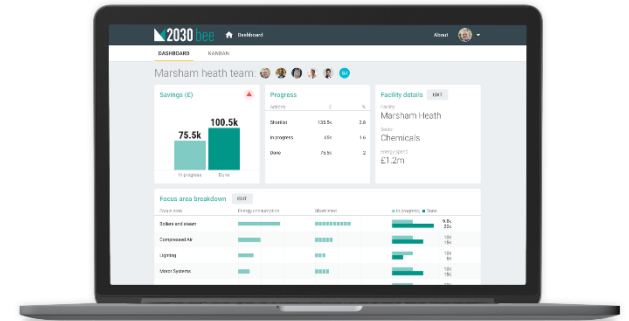
UNLOCK PROGRESS

Remove blockages to progress with access to tips, advice and case studies. M2030 bee helps your operational teams build site specific business cases, empowering them to act quickly, and with confidence.



MANAGE EFFECTIVELY

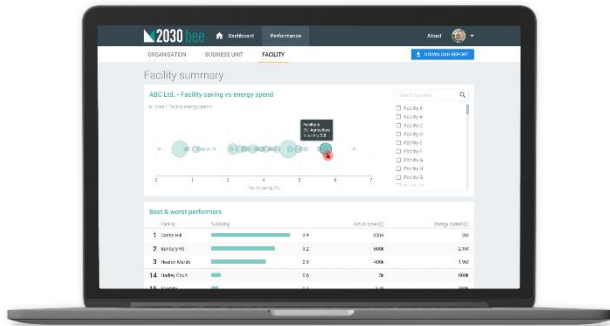
Unlock the ability for busy teams to manage and report on large numbers of improvement opportunities. M2030 bee allows site managers to assign actions to their teams, and track progress towards targets.



HOW M2030 BEE SOLVES YOUR ENTERPRISE LEVEL CHALLENGES:

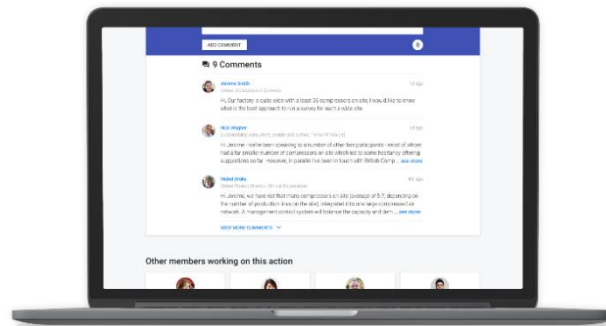
DRIVE CONSISTENCY

Driving consistency and getting all sites to perform like the best isn't easy. M2030 bee provides you with an effortless way to monitor progress towards overall goals and understand which sites require targeted support.



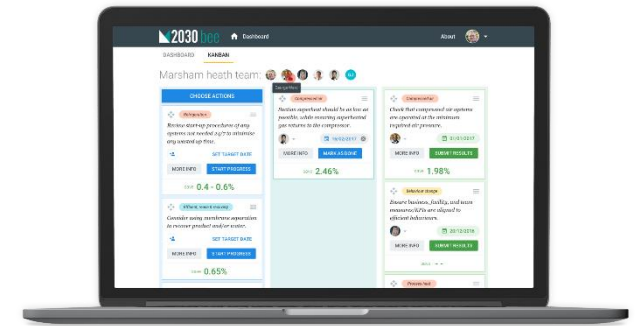
LEVERAGE EXPERTISE

Your most experienced staff are always in demand. M2030 bee saves the time of your star performers; enabling your teams to learn from each other, as well as their peers in other companies and sectors.



DELIVER CHANGE

Delivering rapid change using home-grown systems and spreadsheets is hard work. M2030 bee is so easy and intuitive that your teams will want to use it, rather than seeing it as just another tool that gets in the way.



M2030 BEE USERS INCLUDE YOUR PEERS FROM

EASTMAN

MARS
incorporated

Interface[®]

CalaChem

John

rb Reckitt
Benckiser

M2030 BEE IS VALIDATED BY INDUSTRY EXPERTS

bcas

BYWORTH
BOILERS

Energy Efficien:ology

ERIKS

JRPsolutions
The Energy Specialists

STAR
REFRIGERATION

sapartners
Together, the power to improve

CARBON
TRUST

THE INDUSTRY PERSPECTIVE

“We believe that collaboration and best practice sharing within our own and other industries through the Manufacture 2030 platform will... accelerate our progress in managing our operations more sustainably.”

Ian Knight – Global Site Sustainability Manager

MARS

“A significant challenge all businesses face is knowing where to place time and resource. However, the bee goes a long way to minimising this issue, as the ROI and complexity data gives us an informed, indicative picture of what we need to concentrate on. This enables us to feel confident in placing more resource in projects which look more successful – saving us time, resource and money.”

Wayne Hodges – Engineering Manager

freshtime

FIND OUT HOW M2030 BEE CAN HELP YOU LEAD ON RESOURCE EFFICIENCY

Contact us for more information:

 customer_service@manufacture2030.com

 +44 (0) 1865 597640

