



Partnerships & Other Innovative Approaches for Biodiversity Conservation

SUSAN D. KELSEY
GLOBAL BIODIVERSITY PROGRAM MANAGER
GENERAL MOTORS

JULY 19, 2017

SUPPLIER PARTNERSHIP - DETROIT



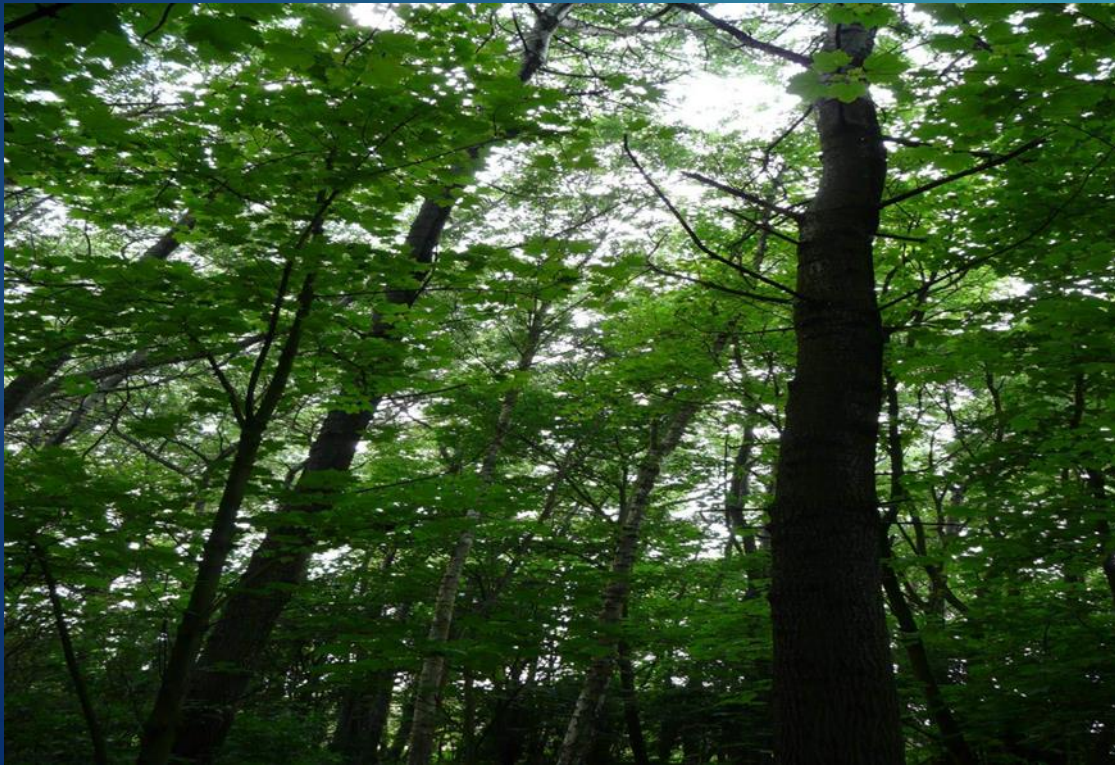
Biodiversity integrated into GM Manufacturing Commitments



“Secure Wildlife Habitat Certification (or equivalent) at each GM manufacturing site where feasible by 2020”

GM Biodiversity Program

- ▶ Congruent to UN Goal 15 –
 - ▶ Protect, restore and promote sustainable use of terrestrial ecosystems, sustainably manage forests, combat desertification, and halt and reverse land degradation and halt biodiversity loss



Vauxhaull, Ellesmere Port, UK – photo, Daryl Heath



Drayton Warehouse, MI USA – photo, Susan Kelsey



San Luis Potosi, México – photo, Susan Kelsey

Top-Down Goals

- ▶ Top-down push creates cultural change
- ▶ Value biodiversity
 - ▶ People learn what it is and how it affects them
 - ▶ Engages employees
 - ▶ By product – millennials drawn to organizations with high sustainable values & stock awareness and purchase
- ▶ Global focus – management held accountable
- ▶ System approach using common stds
- ▶ Country/regional biodiversity alignment
- ▶ Leverage our size



Photo, Kelley Briggs, CCA- HQ, Grand Blanc, MI USA

Started with - Do Anything

- ▶ Pollinator garden
- ▶ Rain garden
- ▶ Educating school children



*Detroit/Hamtramck Assembly Center,
USA, photo Pamela Jamieson*

Sustainability & Business Opportunities



- ▶ Discovered could
 - ▶ Increase in biodiversity
 - ▶ Could save money
 - ▶ Get people involved



*Detroit/Hamtramck
Assembly Center 2005 &
2006, photos Tim Core*

Corporate Manufacturing Commitments

- ▶ Handprint ↑ vs footprint ↓
 - ▶ Positive sustainable business impact vs non-sustainable business impact
 - ▶ Net positive biodiversity improvement
 - ▶ Biodiversity goal & community outreach work in tandem
 - ▶ Team development

Major Construction Projects

- ▶ LEED certification
- ▶ Build in green infrastructure
- ▶ Difficult to fully cost account



GM Milford Proving Grounds – Visitor Center, Milford, MI USA



GM Milford Proving Grounds – Visitor Center,
Milford, MI USA





Employee enthusiasm
 Sites with wildlife habitat teams are involved

GM 2016 Wildlife Habitat Calendar

Photo: James S. Smith, GM Global HQ, Renaissance Center, Detroit, MI USA

January

Sunday	Monday	Tuesday	Wednesday	Thursday	Friday	Saturday
December 27 <i>Eastern Fox Squirrel, Fort Wayne Assembly, IN</i>	28 <i>Eastern Fox Squirrel, Fort Wayne Assembly, IN</i>	29 <i>Eastern Fox Squirrel, Fort Wayne Assembly, IN</i>	30 <i>Peregrine Falcon, GM Tech Center, MI</i>	31 <i>Peregrine Falcon, GM Tech Center, MI</i>	1 <i>New Year's Day</i>	2
3	4	5 <i>Christmas Bird Count Ends</i>	6	7	8	9
10 <i>Save the Eagles Day</i>	11	12	13	14	15	16
17	18 <i>Martin Luther King, Jr. Day</i>	19	20	21	22	23
24	25	26	27	28	29	30
31 <i>Indigo Bunting, GM Tech Center, MI</i>	<i>Indigo Bunting, GM Tech Center, MI</i>	<i>Common Grackle</i>	<i>Turkey Vulture, Desert Proving Ground, AZ</i>	<i>Turkey Vulture, Desert Proving Ground, AZ</i>	<i>Turkey Vulture, Desert Proving Ground, AZ</i>	<i>Turkey Vulture, Desert Proving Ground, AZ</i>

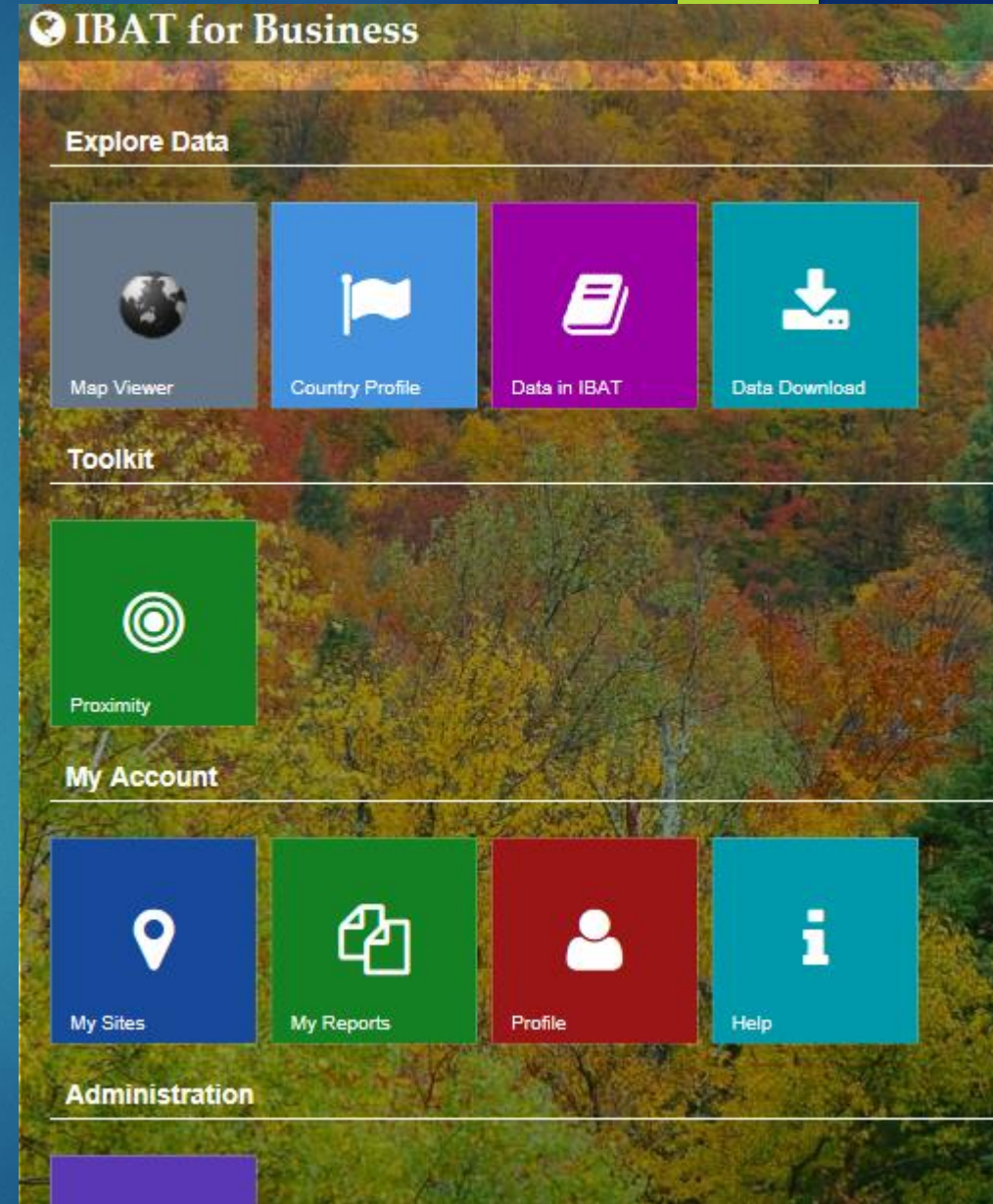
Focused approach

- ▶ Found experts in field; credible with other professional on subject matter
- ▶ Have mission and goals
- ▶ Have good networks for members & are willing to work with business
- ▶ Identification of tools



IBAT for Business

- ▶ Integrated Biodiversity Assessment Tool
- ▶ Gives good information for decision making and report out for GRI/Sustainability Reports
- ▶ Show maps – where GM located around world, where KBAs, and AZE are located

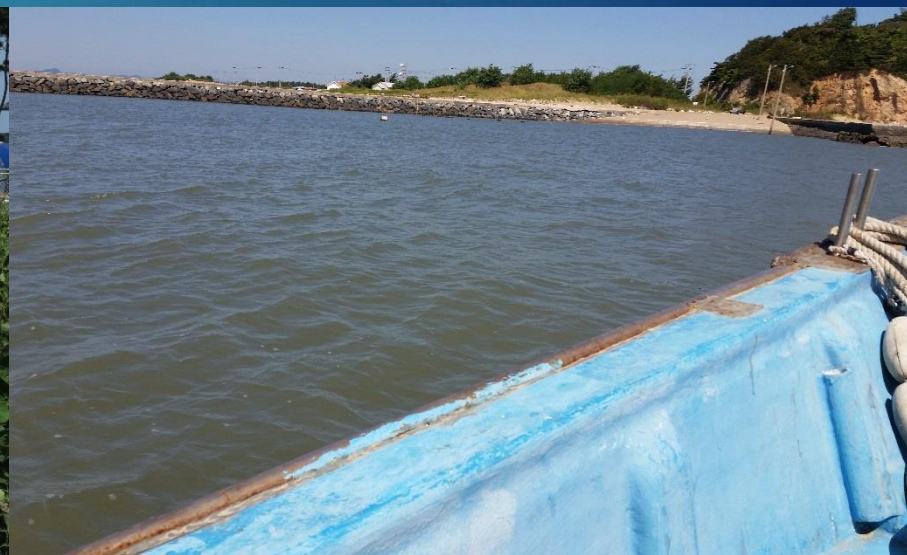




- ▶ Flyway information – looking to create bird corridors
- ▶ Wildly connected throughout the world
- ▶ Members are local to GM sites – free expert help



Yubu-do Island – Geum-gang Estuary/River, Republic of Korea



Scrap GM Chevrolet Volt battery housing – nesting boxes



Hen & chicks walking in river

- ▶ Endangered scaly-sided merganser – nest box made from scrap GM Chevrolet battery housing. Work done in conjunction with **WWF, Wetlands International, and GM at the Changbai Mountain National Nature Reserve, China**
- ▶ Example of keeping GM manufacturing sites landfill-free while creating habitat for wildlife



Hen & chick jumping out of nest



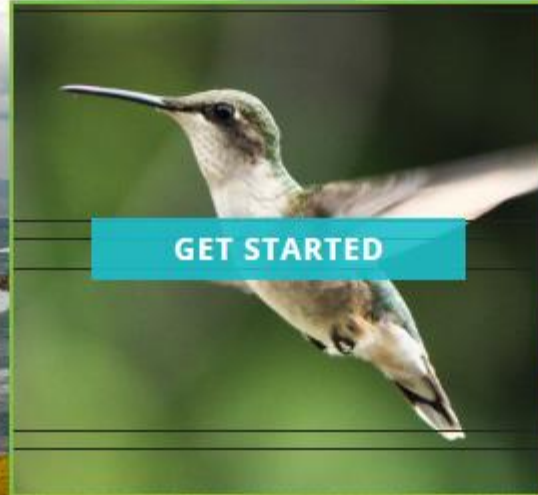
Wildlife Habitat Council

wildlifehc.org

- ▶ Non-profit, non-lobbying
- ▶ Global focused
- ▶ Standards based
 - ▶ Available online to anyone
 - ▶ Developed using subject matter experts
 - ▶ Creating transparency
- ▶ Common currency
 - ▶ Standards create common minimum requirements
- ▶ Country biodiversity focused
- ▶ Site projects – align to biodiversity goals
- ▶ 3rd party certifications
- ▶ Project Requirements
 - ▶ Beyond regulatory requirements
 - ▶ Locally appropriate
 - ▶ Conservation objectives
 - ▶ Value & benefits
 - ▶ Monitoring and documentation



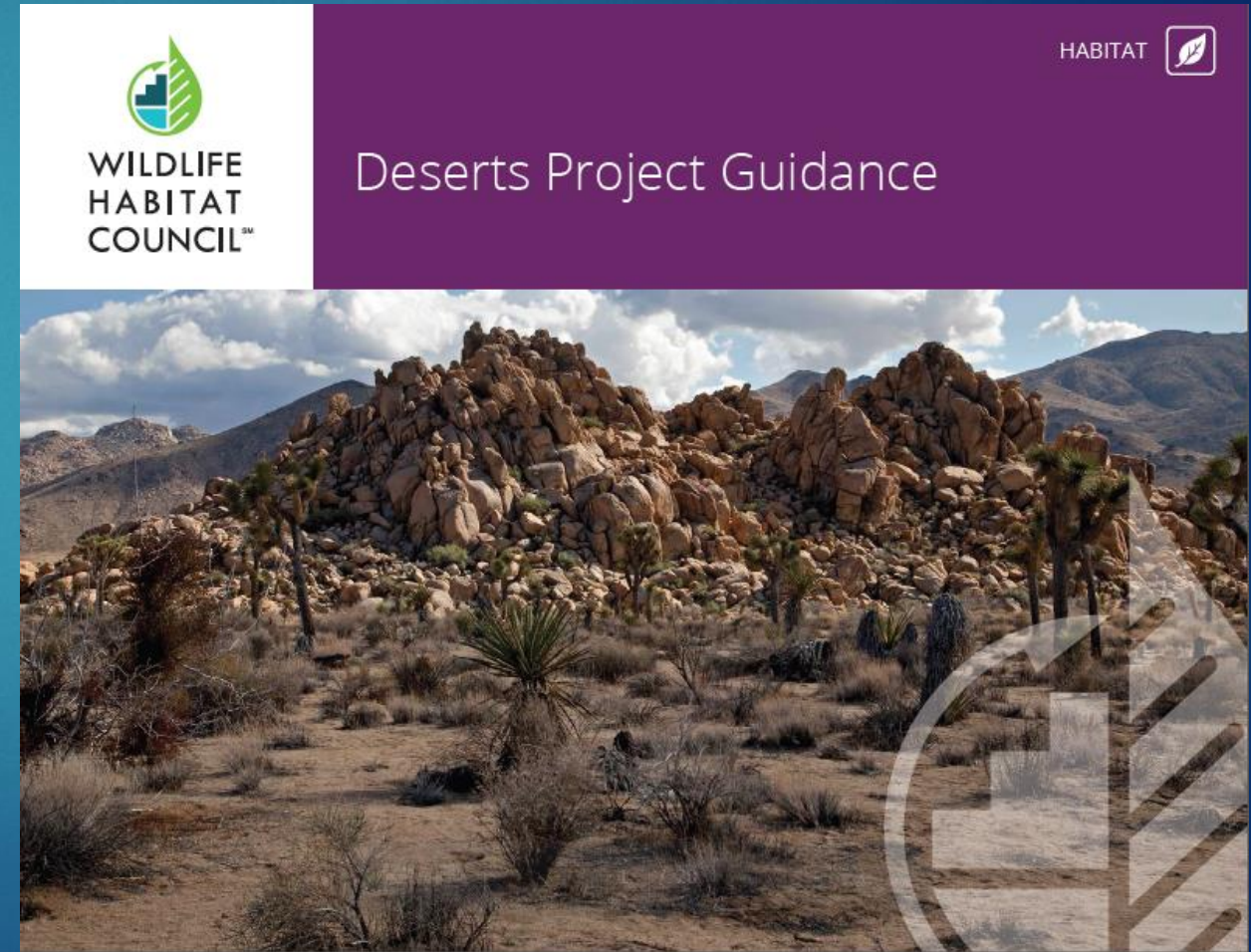
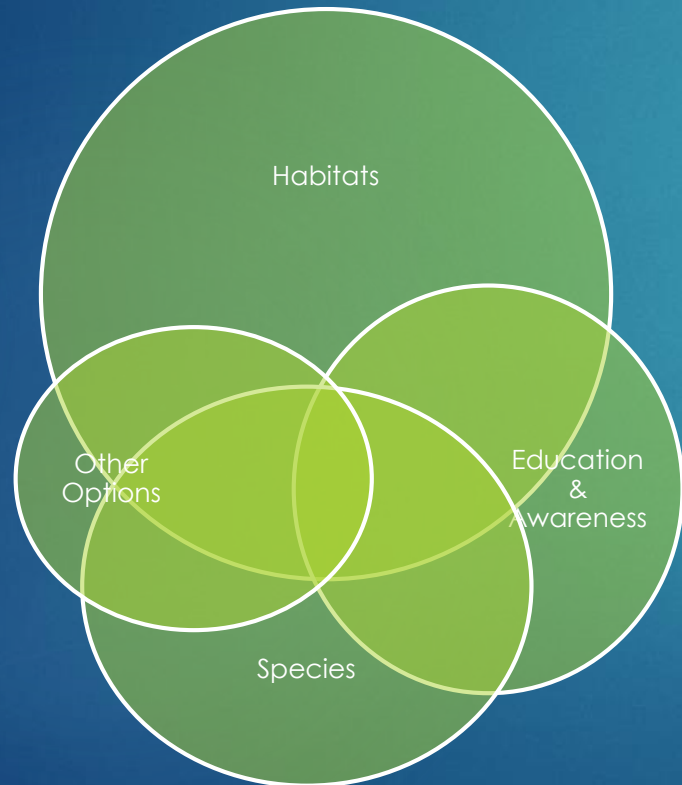
Every act of conservation matters.



SCROLL ▾

Project Guidances

Broken Into Major Categories



Does the project provide conservation or conservation education value?	12.1.1	>0	0
	12.1.2	>0	0
Does the project have documented outcomes?	12.4.3	>0	0

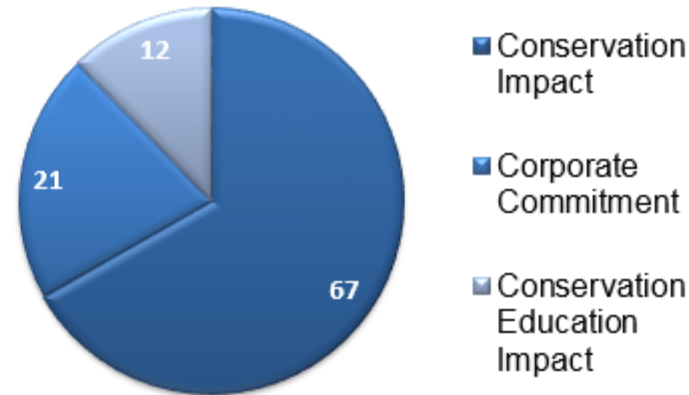
class = qualifying

Attribute scores

Q no.	Attribute	Score	Out of
12.1.1	Size	0	4
12.1.2	Duration	0	4
12.1.3	Locally appropriate	0	12
12.Q.2	Stated conservation objective	0	Yes/No
12.2.1	Previous land use	0	2.1
12.2.2	Design Considerations	0	2.1
12.2.3	Size of addition	0	1.8
12.3.1	Management and maintenance	0	23
12.4.1	Baseline documentation	0	3.75
12.4.2	Plan or protocol quality	0	6.25
12.4.3	Implementation	0	8.75
12.4.4	Evaluation of monitoring data	0	6.25
12.5.1	Employee participation	0	3.5
12.5.2	Employee engagement	0	3.5
12.6.1	Partner participation	0	2.8
12.6.2	Partner engagement	0	2.8
12.6.3	Technical advice	0	2.4
12.Q.5	Exceeds regulatory requirements	0	Yes/No
12.7.1	Connectivity	0	5
12.8.1	Corporate level commitment	0	1.2
12.8.2	Large-scale initiative alignment	0	3.9
12.8.3	Existing certifications	0	0.9

Impact categories

(% of total score)



For information on the how these scores were calculated, please see wildlifebc.org



GM Sites Certified by WHC

- ▶ 65 sites certified
 - ▶ 51 manufacturing sites (59% done); 14 non-manufacturing sites (extra)
 - ▶ 15 countries:
 - ▶ USA
 - ▶ Canada
 - ▶ Mexico
 - ▶ Brasil
 - ▶ Argentina
 - ▶ Colombia
 - ▶ UK - England
 - ▶ Austria
 - ▶ Spain
 - ▶ China
 - ▶ Thailand
 - ▶ Republic of Korea
 - ▶ India
 - ▶ Uzbekistan
 - ▶ South Africa



POLLINATOR PARTNERSHIP

Mission -Help people protect pollinators to ensure healthy ecosystems and food security.

- ▶ Signature initiatives include the [NAPPC \(North American Pollinator Protection Campaign\)](#), [National Pollinator Week](#), and the [Ecoregional Planting Guides](#).
- ▶ Get people involved at all levels – government, academia, business, etc.
- ▶ Working to stabilize and improve populations of pollinators in North America
- ▶ We work with them on research at two Ohio GM sites
- ▶ pollinator.org





USBCSD & Pollinator Partnership

(United States Business Council for Sustainability Development)

- ▶ Commissioned Pollinator Study
 - ▶ P2 identified how many USBCSD companies are creating pollinator habitat
 - ▶ What kind of habitat
 - ▶ Native species
 - ▶ Etc.
- ▶ Challenged other companies regarding what they were doing at the annual meeting
- ▶ Explained biodiversity is a unique aspect of a sustainability program

batcon.org
BAT CONSERVATION
INTERNATIONAL



- ▶ Connects bat research around the world
- ▶ Connects us with local experts
- ▶ Creating bat corridors with them in Mexico
- ▶ batcon.org



Bat house made from GM Chevrolet scrap Volt battery housing – keeping mfg site landfill-free

Building Business Value

- ▶ Creates a large quilt of connected patches of flora and fauna
- ▶ Serve and improve the communities where we live and work
- ▶ Keeps employees engaged
- ▶ Uses employees creativity/imagination for sustainable environment



Quilt

- ▶ What are you doing to increase biodiversity?





Questions?