



Managing Global EHS Risk: A Solution

Katie Florio

Elizabeth Aramowicz Smith

July 19th, 2017



Antea Group

From Strategy Through Implementation

By combining strategic thinking and multidisciplinary perspectives with technical expertise and pragmatic action, we do more than effectively solve client challenges; we deliver sustainable results for a better future.



**Transaction
Support**



**Operational
Performance
& Assurance**



**Sustainability
& Corporate
Responsibility**

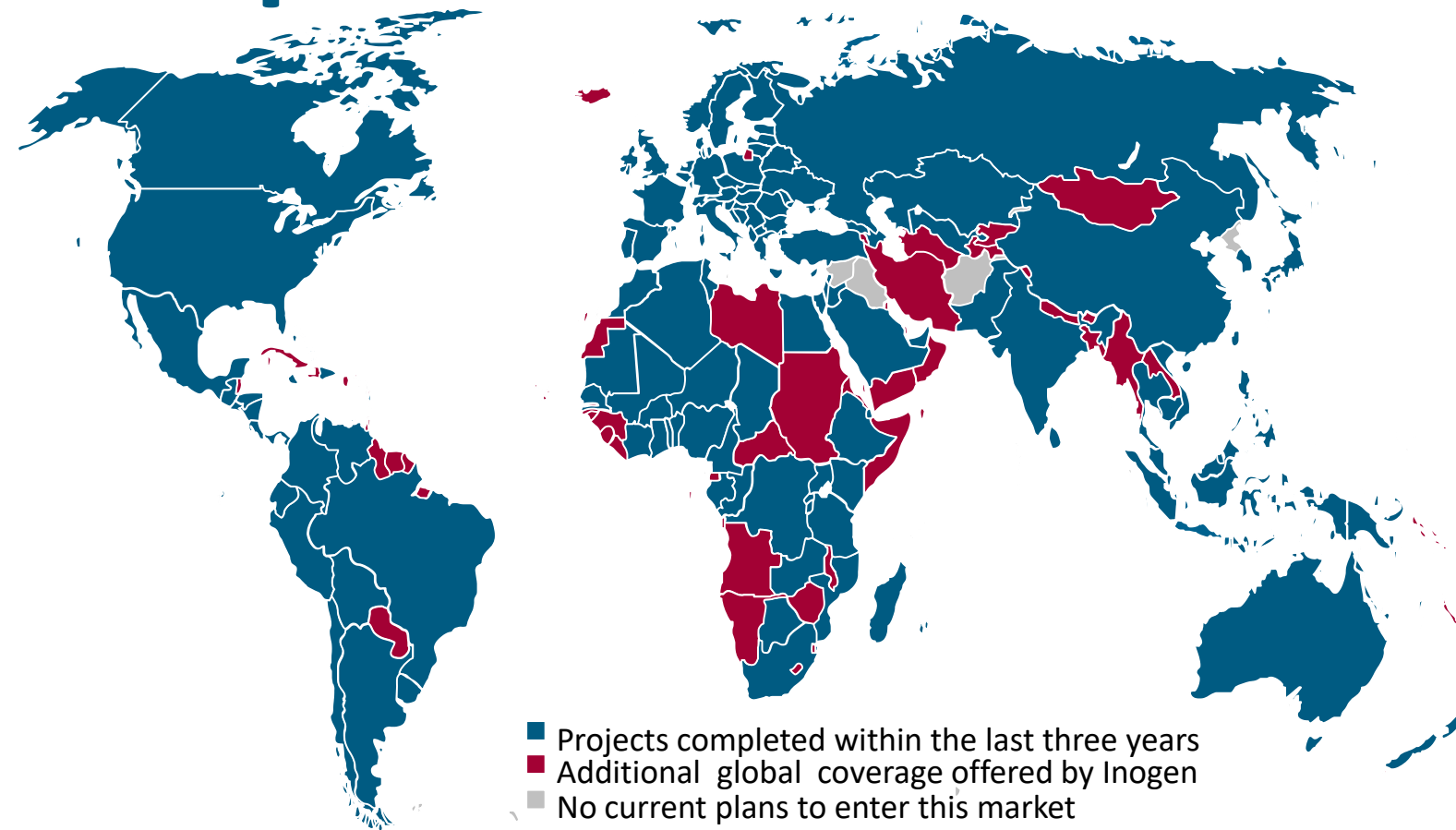


**Environmental
Liability
Management**



**Health &
Safety**

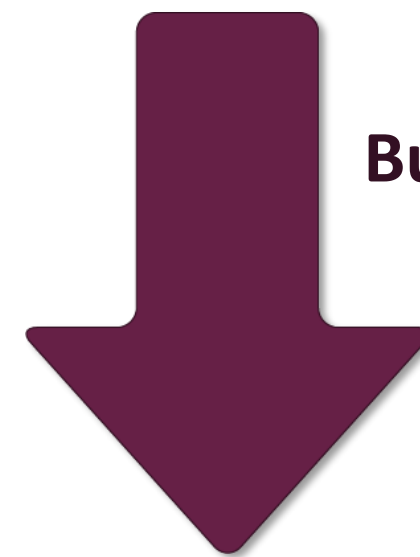
Worldwide Capabilities



Antea Group is a wholly-owned subsidiary of Oranjewoud, a publicly traded company listed on the NYSE Euronext exchange, with **annual revenues exceeding \$2B.**

Antea Group is a majority shareholder of the Inogen Environmental Alliance, offering **4,300 consultants in 160 offices** with experience on **six continents.**

Why are we here?



**Declining EHS
Budgets & Resources**



**Same/Increasing
EHS Risks**

Business Disruptions

Challenges for Managing EHS risks across the value chain:

- Resource scarcity
- Price volatility
- Climate change
- Brand disruption
- Change in Global Regulations
- **Supply chain sustainability**



Best in Class Supply Chains:

- Sustainable procurement solutions that are collaborative:
 - Equal partners in review and sharing of information
 - “Supplier Relationship Center”
- EHS functionality in procurement departments
- Share Data
- Design for scale with achievable, measurable economic and other outcomes.
- **Respond to Customer Questionnaire**

Lessons Learned for a Sustainable Supply Chain

- Qualitative and quantitative metrics for ethical and social issues
- Provide data on performance across the supply chain
- Partner with NGOs and other organizations in specific regions;
- Support business customers and consumers to make more informed choices.



Reporting Fatigue



- How to avoid reporting fatigue:
 - Start by approaching the subject with your colleagues – identify who is receiving these questionnaires, how they are responding, IF they are responding, etc.
 - Map out what information is being requested, and identify champions so you can collect accurate and consistent information for these requests
 - Are key clients sending requests? If so – what is the consequence of not responding / value of responding?
 - Reach out to requestors to ask them questions if you are unsure of how to respond – start the dialogue and understand how they are using this information, are there opportunities to collaborate, etc.

“As a global organization, the task of benchmark auditing all of our facilities and suppliers, developing budgets, and scaling our programs to understand our EHS challenges was daunting. It was also a huge investment – both financially and resource-wise – to undertake. By utilizing Antea Group’s EHS Flex, we were able to evaluate, scale, and rank the EHS risks of our facilities in just 12 weeks. This provided us a road-map to compliance while saving us time, money and resources.”

Staci Miller, Director Global Environment Health & Safety, Elliott Group



What is EHS FleX?



How Global EHS Managers Can Improve the Quality and Reliability of Compliance Data

The screenshot shows a web page with the Antea Group logo and a navigation menu. The main content area features a large image of a man in a hard hat and safety glasses. The article title is "HOW GLOBAL EHS MANAGERS CAN IMPROVE THE RELIABILITY OF FACILITY COMPLIANCE DATA". The date is "March 21st, 2017". The text discusses the challenges of gathering compliance data through self-inspections and third-party audits, and introduces EHS FleX as a solution. A "CONTACT" section lists Elizabeth Aramowicz Smith, a consultant, with her phone number and email. A "RELATED CONTENT" section features a link to "EHS FLEX FOR ENTERPRISE RISK AND GAP ANALYSIS" with a small image of chess pieces. The footer includes a breadcrumb trail, the Antea Group logo, and the Inogen logo.

How Does EHS Flex Work?



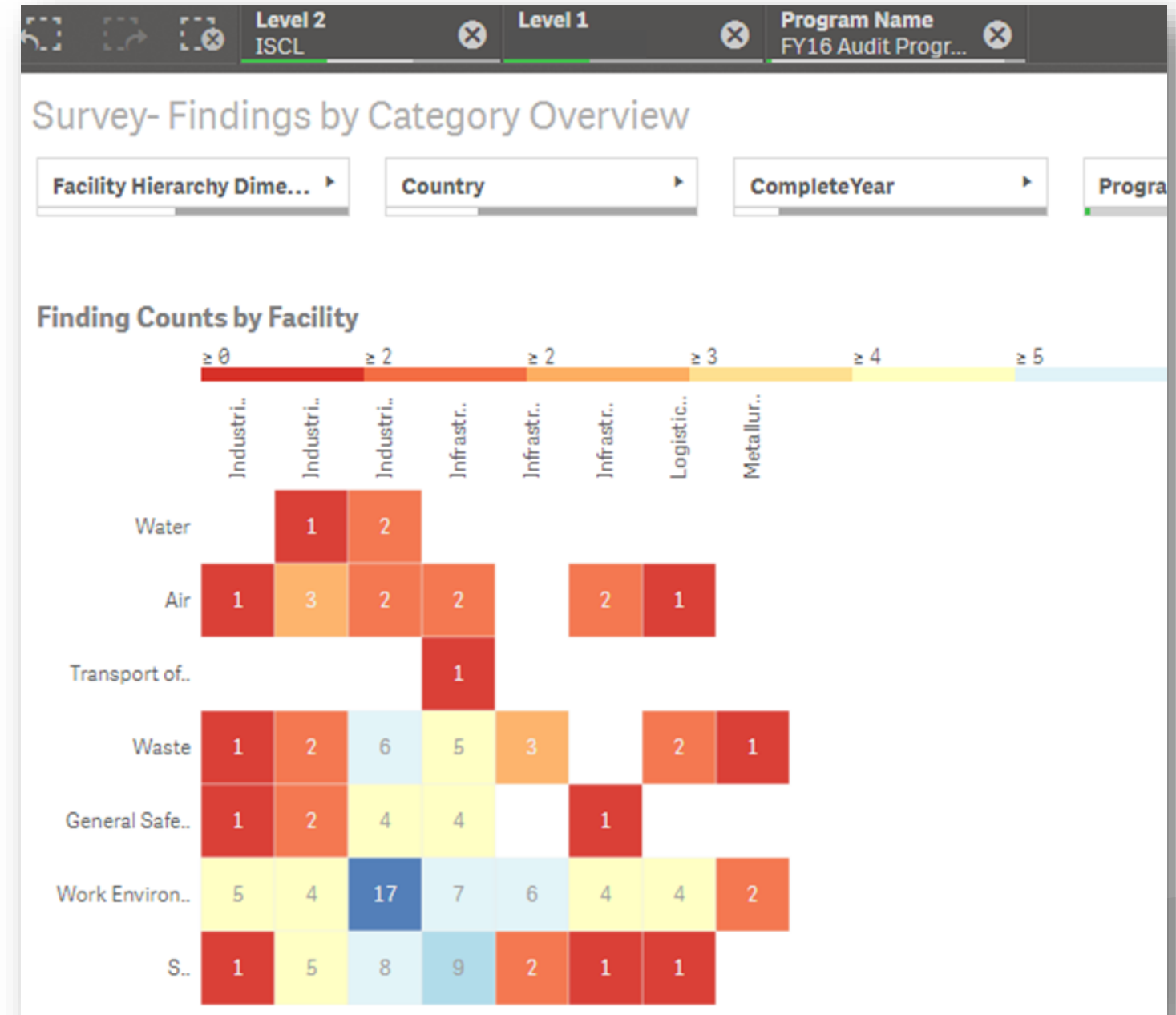
Deliverables

Report

- ✓ Systematic review of compliance gaps globally
- ✓ Prioritization of EHS Risk
- ✓ Validation of EHS Culture of company

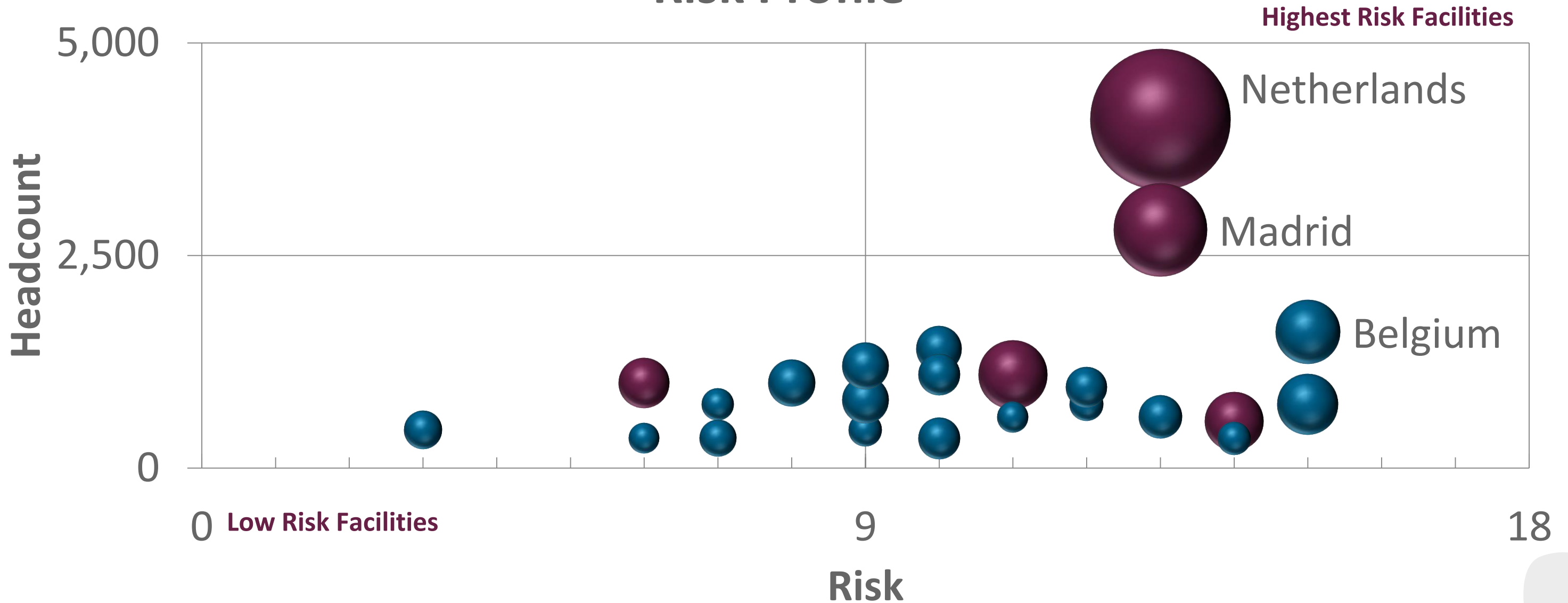
Corporate

- ✓ Trend analysis/recommendations to improve EHS programs at each level of the company



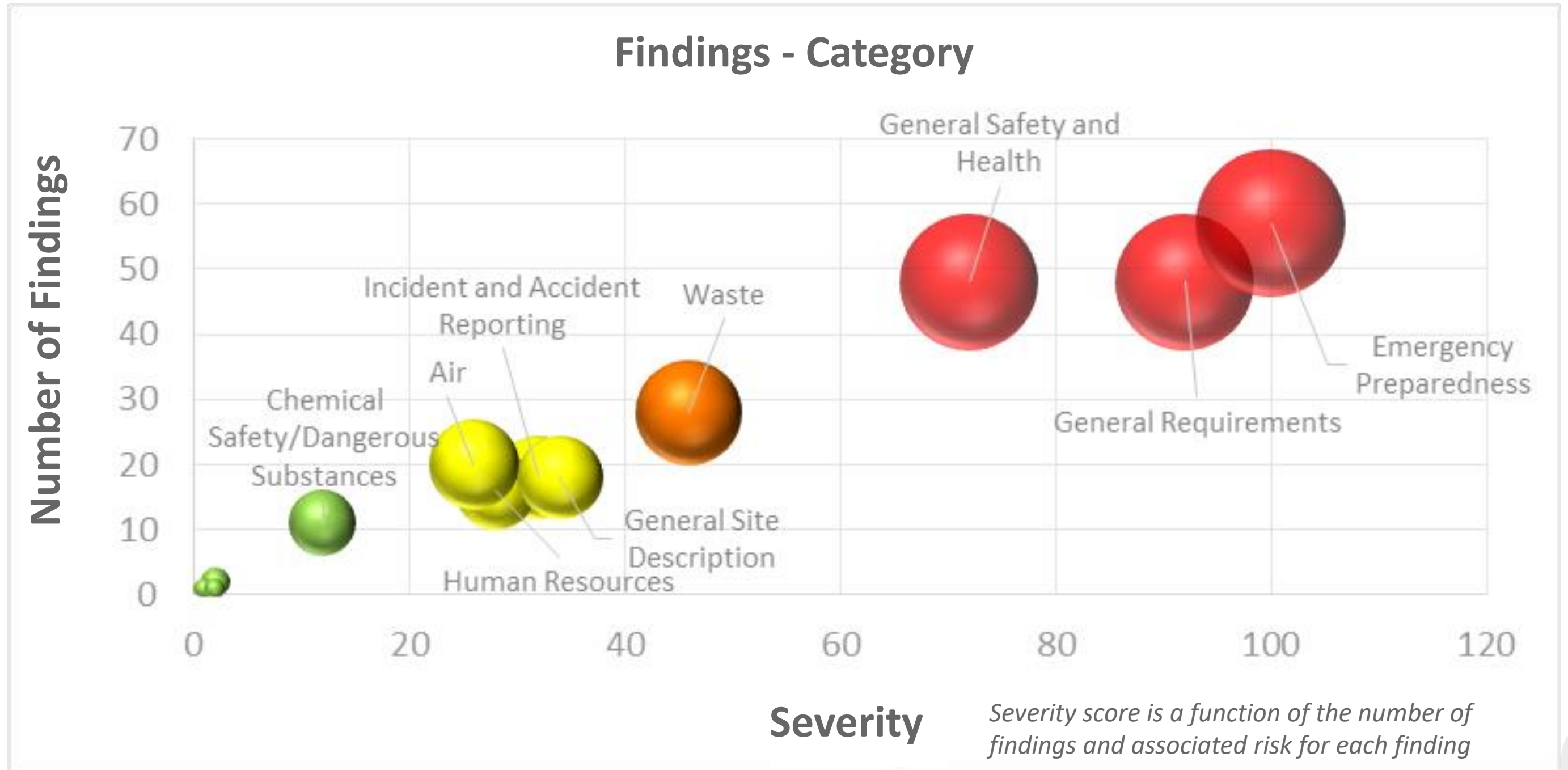
Facility Supplier Risk Profile in a Glance

Risk Profile



The size of sphere is indicative of the level of risk. Red spheres represent owned facilities.

Compliance Gaps by Category

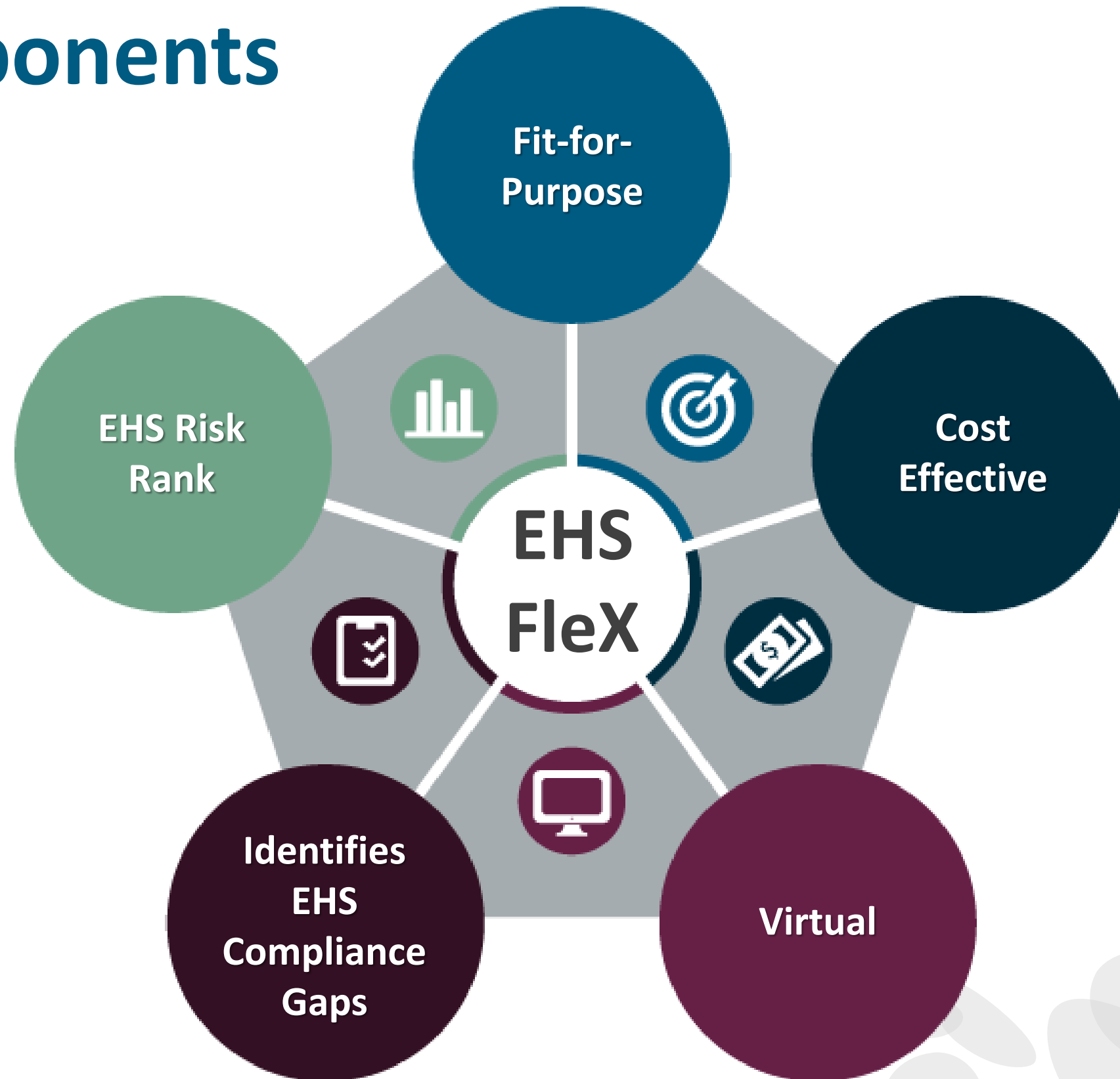


Who Does EHS Flex Benefit?



Geography	Operations
<ul style="list-style-type: none">✓ International✓ Multi-state	<ul style="list-style-type: none">✓ Manufacturing/Heavy Industry✓ Higher Risk Facilities/Suppliers✓ Recent and/or Numerous Acquisitions✓ High Growth

Key Components



Questions?



Contact Information



Elizabeth Aramowicz Smith
Consultant - Solution Leader
Elizabeth.Smith@anteagroup.com
(518) 281-6330



Katie Florio
Business Development
Katie.Florio@anteagroup.com
(847) 863-6240